



## Process adapter with flange plate

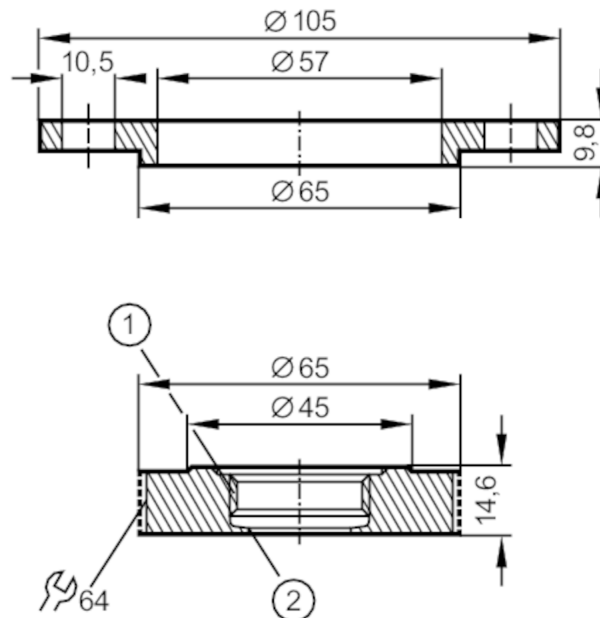
ADAPT IFM-DRD D=65

Article no longer available - archive entry

Alternative articles: E33242

When selecting an alternative article and accessories please note that technical data may differ!

The alternative article requires the use of a new sensor with Aseptoflex Vario external thread



- 1 Aseptoflex thread  
2 Aseptoflex sealing edge

EC 1935/2004 FCM 

## Application

Pressure rating [bar] 25

## Tests / approvals

Pressure Equipment Directive	A possible classification to PED depends on the application and has to be carried out by the user / operator.
Safety instructions	The compatibility between medium and product material has to be checked in all applications.

## Mechanical data

Weight [g]	626.5
Materials	stainless steel (316L/1.4404)
Sensor connection	Aseptoflex
Process connection	DRD-Flansch Ø 65 mm
Surface characteristics Ra/Rz of the wetted parts	0.4 / 4
Hygienic equipment class to DIN 11866	H4

## Remarks

Pack quantity 1 pcs.